

# ODFW 3-Year Action Plan for Beaver-Modified Landscapes

Davia Palmeri  
Adrienne Averett  
Steve Niemela  
Philip Milburn



June 16, 2023



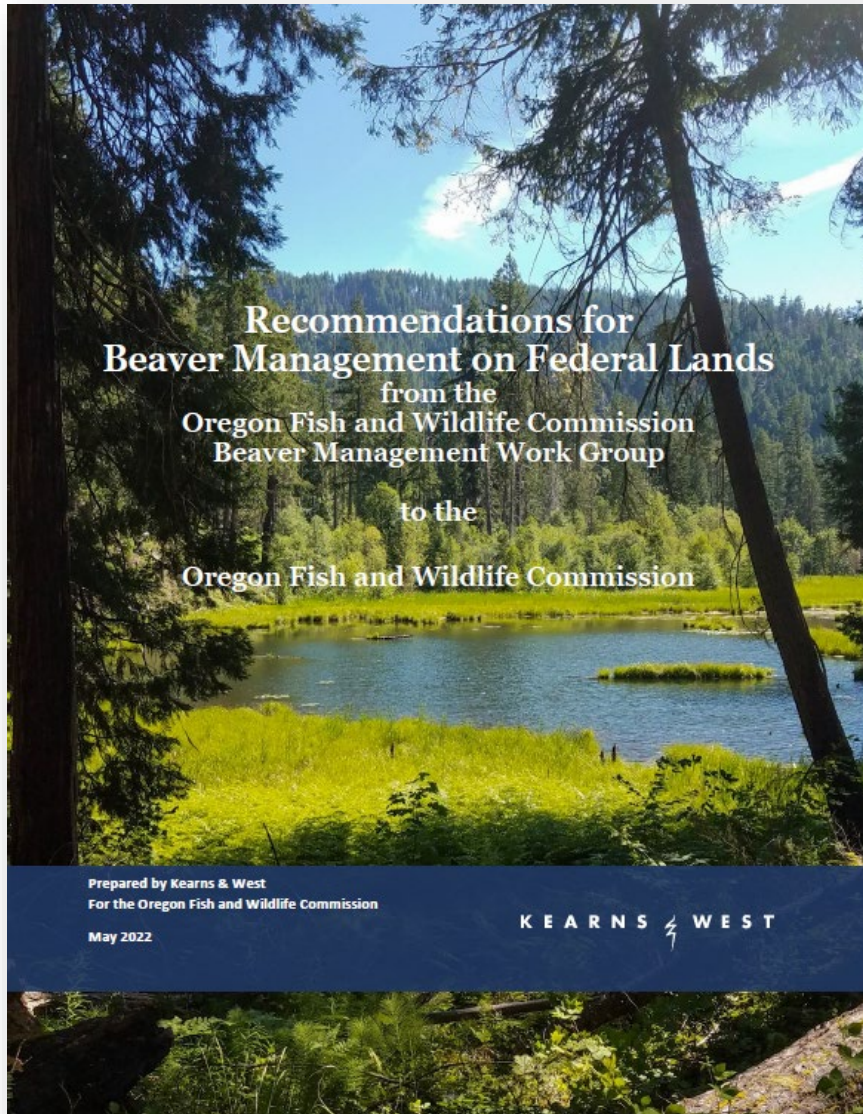
Photo Credit: Chase Dekker; retrieved from Biohabitats.org



# Outline

- Background
- Action Plan Overview
- Beaver Emphasis Areas
- Next Steps

# Background

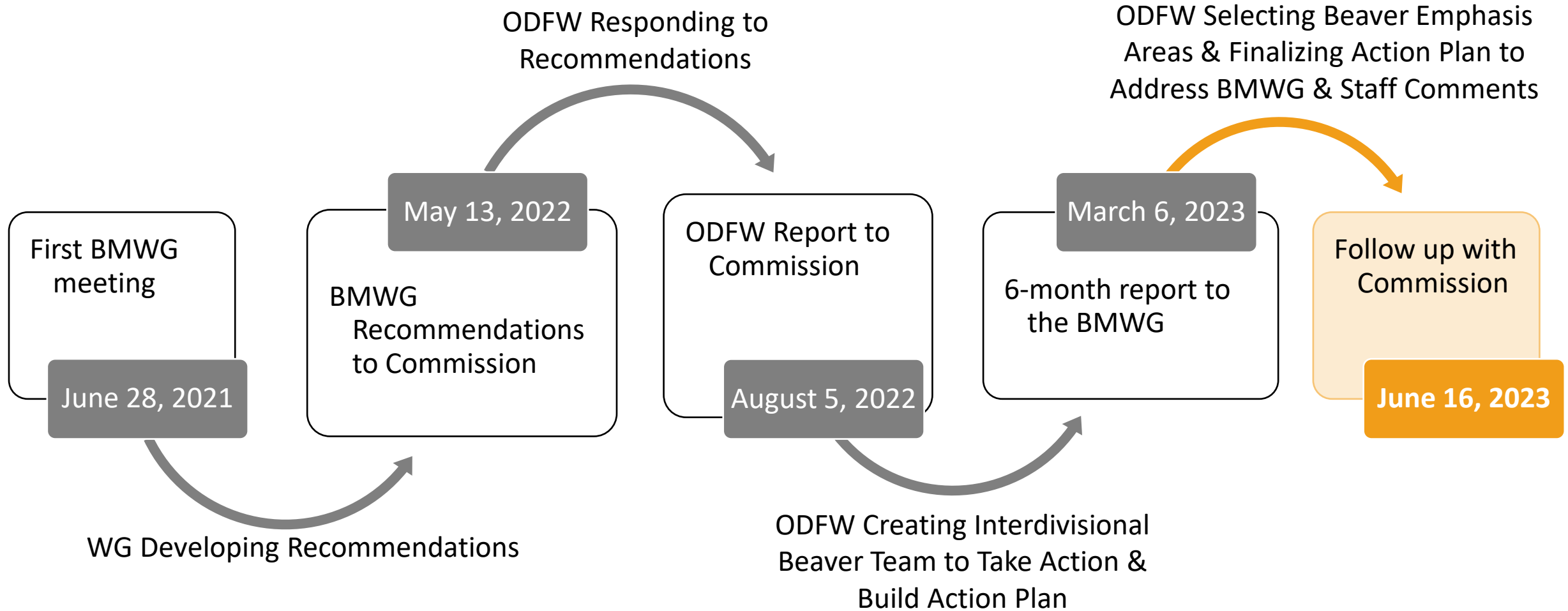


## Recommendation Objectives

- Maximize beaver modified floodplain landscapes and ecosystem benefits on federally managed public lands.
- Improve the scale and breadth of data collection to provide for informed management responsiveness.
- Refine the targeting of management practices through monitoring and research to continue to increase their ability to identify and address limiting factors.
- Communicate benefits and opportunities, as well as appropriate regulatory and policy parameters to the public.

**August 5, 2022:** Commission adopted motion to support the BMWG's recommendations and advised ODFW to prioritize strategies and program integration for advancing beaver-modified landscapes and to report on progress.

# Timeline



# Action Plan Overview

## ODFW's 3-Year Action Plan for Beaver-Modified Landscapes

August 2022 - 2025



Oregon Department of Fish and Wildlife



June 16, 2023

# Integrates & Builds Upon

## Oregon Coast Coho Conservation Plan For the State of Oregon

March 16, 2007

## Conservation and Recovery Plan for Oregon Steelhead Populations in the Middle Columbia River Steelhead Distinct Population Segment

February 2010

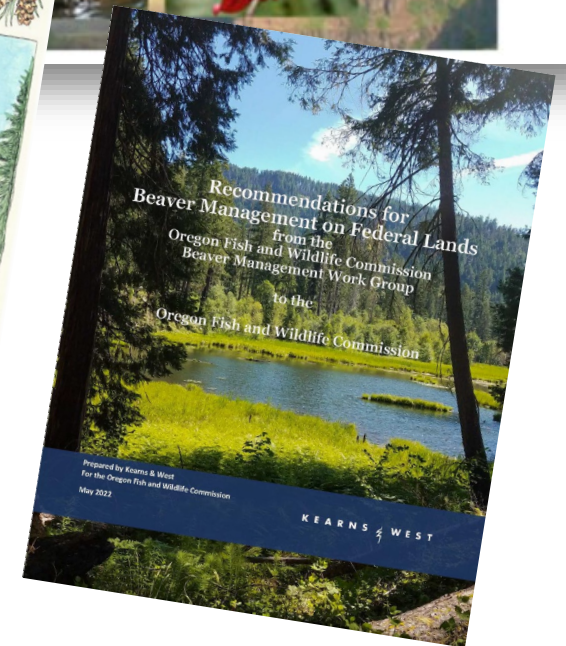
## FINAL Coastal, Columbia, and Snake Conservation Plan for Lampreys in Oregon

Pacific Lamprey  
Western River Lamprey  
Western Brook Lamprey  
Pacific Brook Lamprey

OREGON DEPARTMENT OF FISH AND WILDLIFE  
February 2020

## Rogue–South Coast Multi-Species Conservation and Management Plan

Approved by the Oregon Fish and Wildlife Commission:  
December 17, 2021



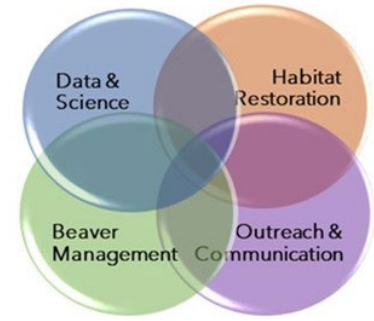
# Beaver-Modified Landscapes Action Plan: GOAL

ODFW staff will take action in the short-term to accelerate the restoration of beaver habitat and beaver-modified habitat at the landscape-scale in Oregon.

# Pillars of Action

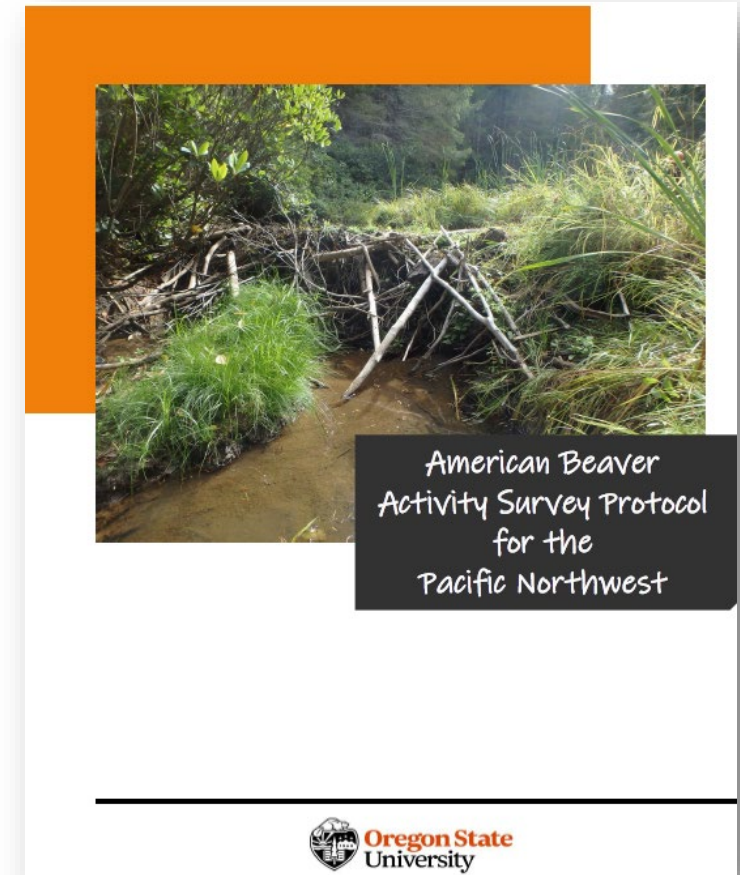


# Pillar 1: Data & Science



*Goal: Improve understanding of current beaver presence, constraints on beaver distribution, and the habitat needs of beavers in Oregon.*

-  **1A** Existing Data Synthesis & Standardization
-  **1B** Protocol ID, Field Testing, & Data Management
-  **1C** Beaver Emphasis Area (HUC 10) & Leads Selection
- 1D** Beaver Emphasis Area Field Surveys
-  **1E** Effectiveness Monitoring (BDAs, Beaver Dams, Coexistence Devices)



# Pillar 2: Habitat Restoration

*Goal: Advance prioritized beaver and beaver-modified habitat restoration in Oregon.*



 **2A** Develop Beaver Habitat Management Guidance

**2B** Beaver Emphasis Area Partner Collaboration & Project ID (linked to Actions 1C & 1D)

**2C** Fish Passage Rule Revision (beaver flow device flexibility)

**2D** Emphasize Beaver-Modified Habitat actions to address OR Conservation Strategy's Key Conservation Issues



Post-habitat restoration beaver activity, Wallowa River (Photo: W. Morton, ODFW)

# Pillar 3: Beaver Management

*Goal: Improve beaver management.*

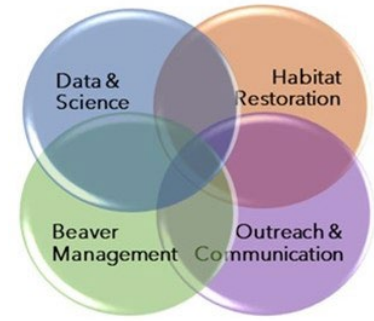


- 3A** Improve Beaver Damage Complaint Report System & Response
- 3B** Beaver Emphasis Area Partner Collaboration & Coexistence on Public & Private Lands (linked to Actions 1C, 1D, 2B)
-  **3C** Implement Beaver Coexistence Strategies with public & private landowners, including ODF & Private Forest Owners
-  **3D** Implement New Harvest Reporting Requirements & Track Beaver Harvest Data to support responsible trapping management






Image: My Modern Met

# Pillar 4: Outreach & Communication



*Goal: Increase awareness of the benefits of beaver-modified habitat. Increase implementation of human-beaver coexistence strategies across Oregon.*

-  **4A** OSU Beaver Coexistence Community Science Study
-  **4B** Financial/Technical Support to Partners for Beaver Restoration Guidebook revision, Beaver Flow Device BMP Manual, & Statewide BRAT model project plan
-  **4C** Update ODFW's Living with Beaver Website Materials
- 4D** Reestablish a Beaver Coordination Forum



ODFW and partners cutting and preparing willow stakes for beaver food and dam building materials (Photo: ODFW)

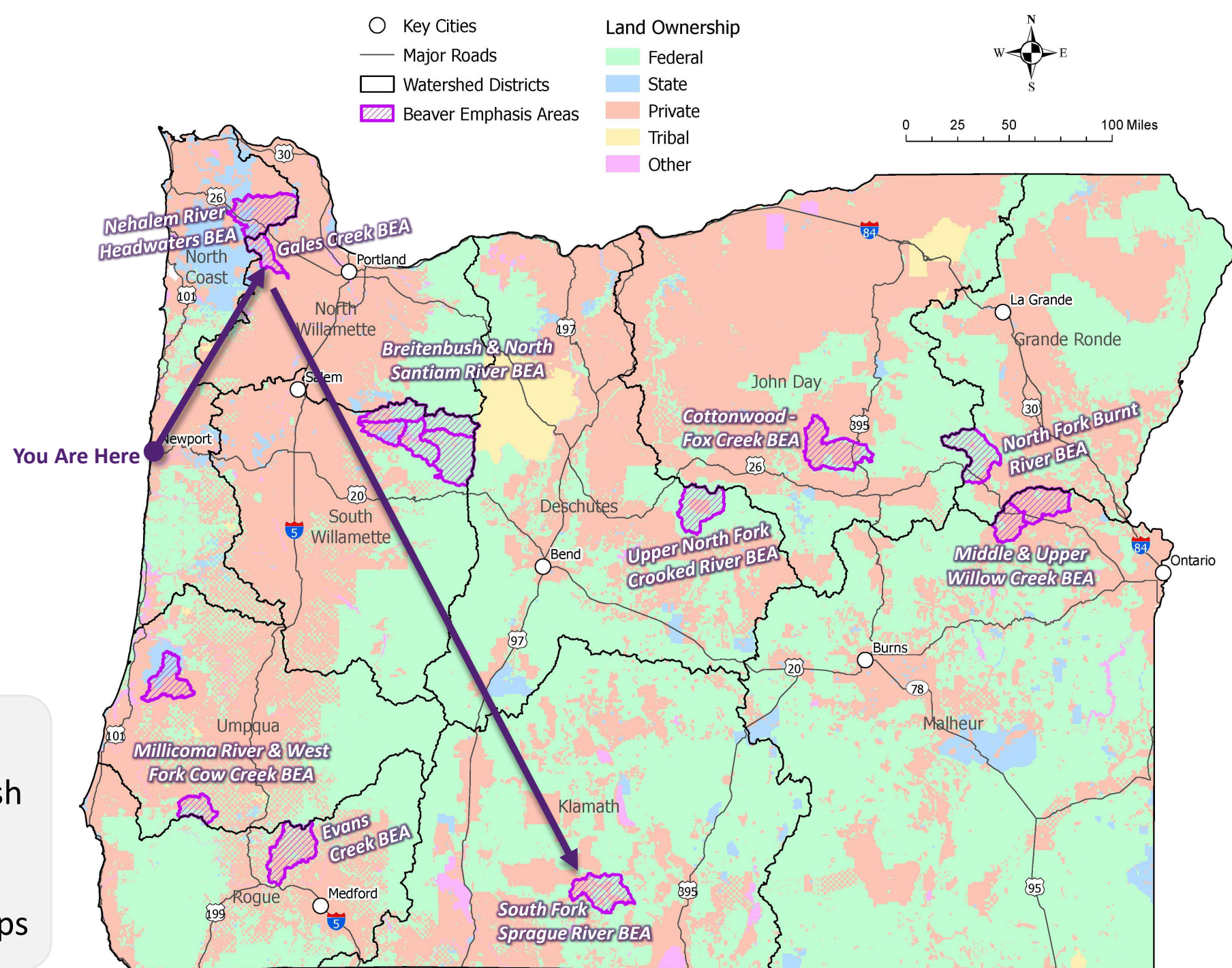
# ODFW's Community of Practice

- Fish & Wildlife Team
- District Wildlife Biologists (Bios)
- Wildlife Research Bios
- Good Neighbor Authority Coordinator
- Land Use & Waterway Alteration Coordinator
- Stream Habitat Restoration Bios (E, W)
- Water Quantity & Quality Program Staff
- Native Fish Conservation & Recovery Coordinators
- Statewide Instream Flow Bios
- NRCS Liaisons
- District Fish Bios
- Fish Research Bios
- GIS staff
- NRIMP staff
- I&E staff
- Furbearer-Carnivore Coordinator
- Oregon Conservation Strategy Coordinators
- Private Forest Accord (PFA) Beaver Conservation Bios
- PFA Stream Survey Bios
- Aquatic Inventories Bios



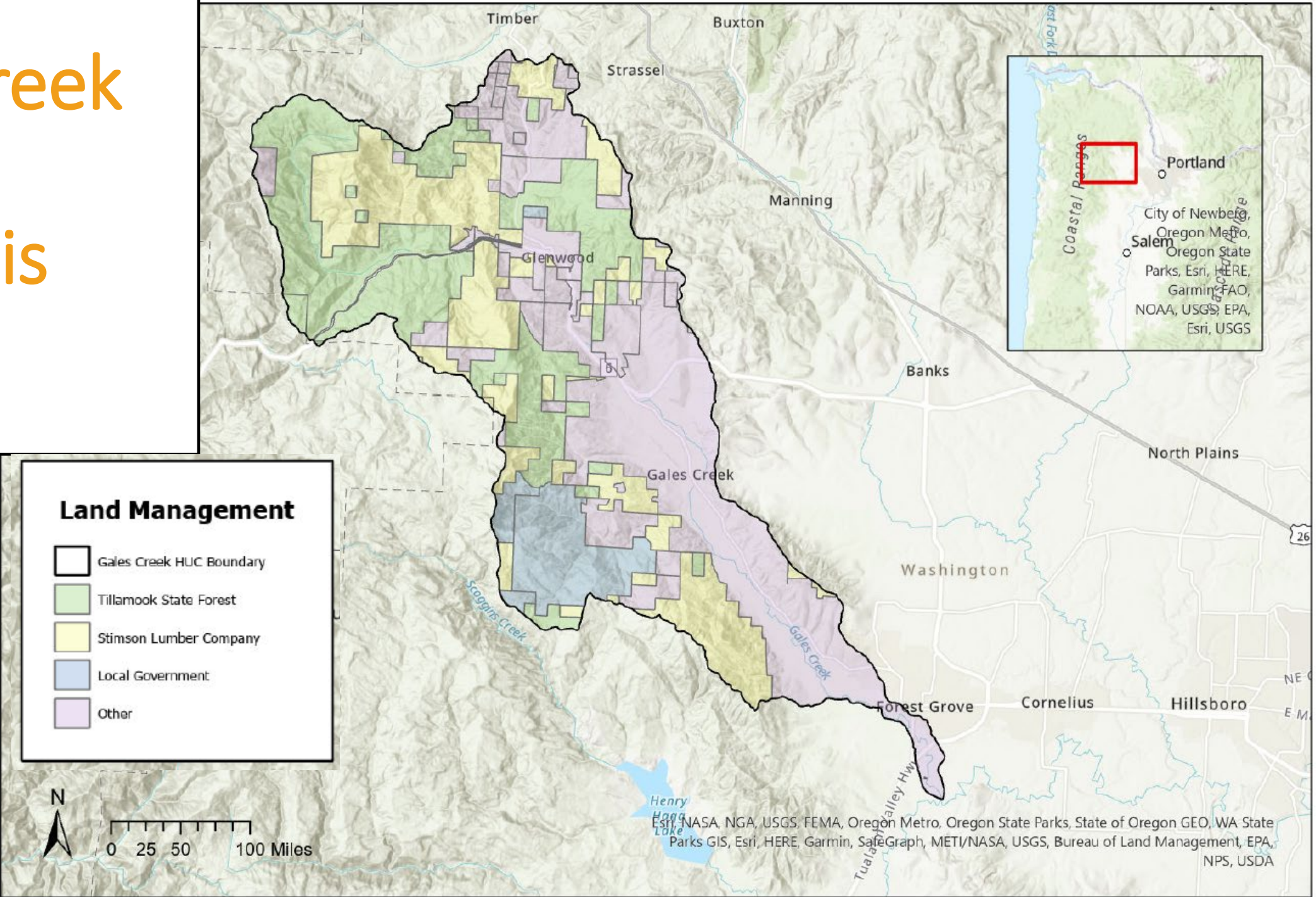
Results of floodplain recovery, monitoring, and vegetation management throughout a 20-year period in Trout Creek, a tributary to the Deschutes River (Photo Credit: T. Nelson, ODFW)

# Beaver Emphasis Areas



- Plan Actions 1C, 1D, 2B, 3B
- ODFW Wildlife, Habitat, Fish effort (existing resources)
- Additive to current work
- 100% Voluntary Partnerships

# Gales Creek Beaver Emphasis Area



# Gales Creek Beaver Emphasis Area

## Confirmed Partners



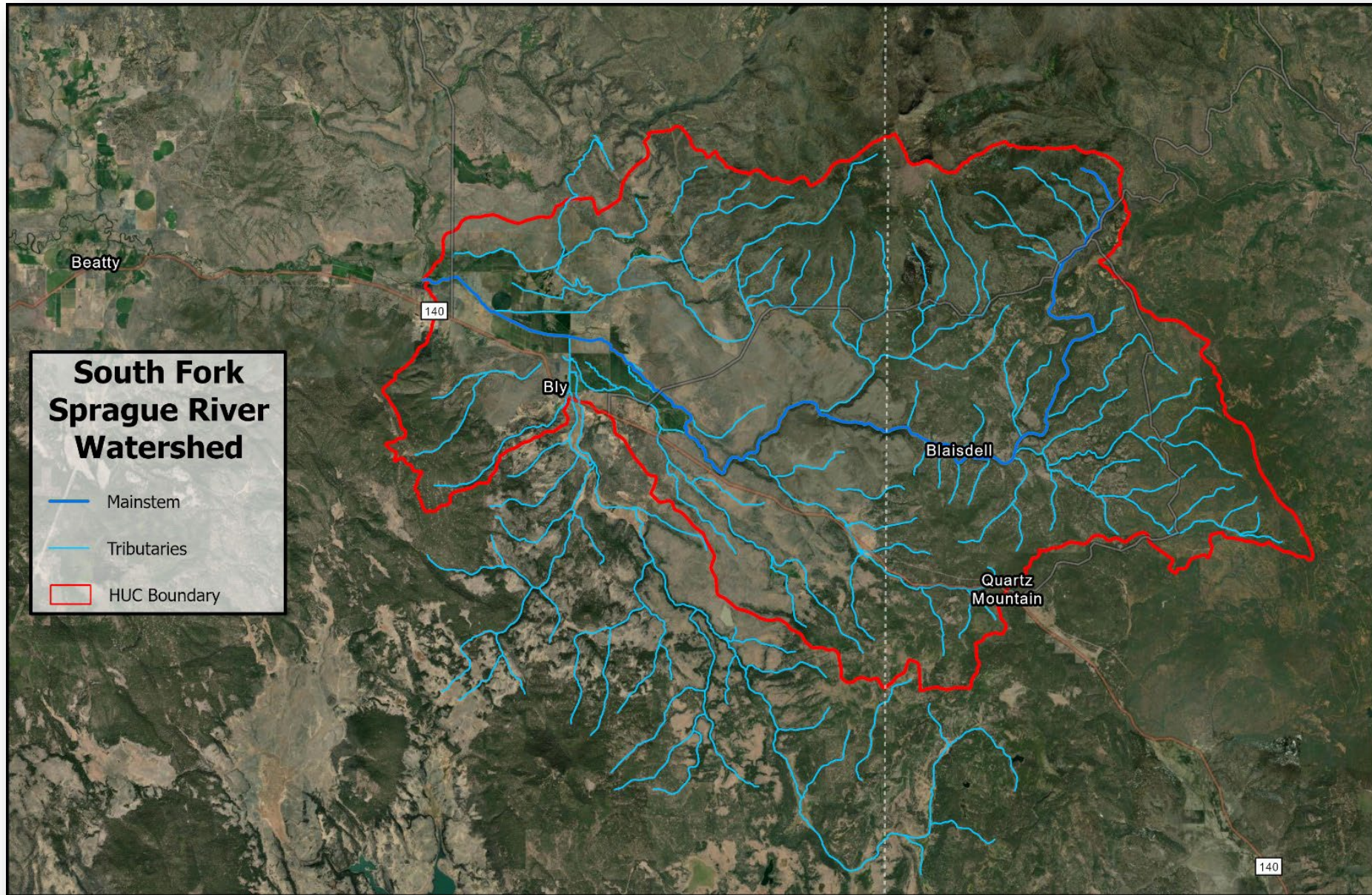
## Prospective Partners



## Species of Interest



# South Fork Sprague Beaver Emphasis Area



Beaver Emphasis Area:  
South Fork Sprague River



# South Fork Sprague Beaver Emphasis Area

## Challenges



## Opportunities



# Next Steps

- Create tools and shared information
- Coordinate to complete Plan actions
- Track progress
- Share outcomes



# Summary

- Expanding internal and external collaborative partnerships
- Increasing our state of knowledge
- Beaver-modified landscape restoration progress
- Improving conditions for Oregon's flowing water, riparian, and wetland dependent species



Photo Credit: BLM



Photo Credit: USFWS



Photo Credit: Keith Kohl, ODFW



Photo Credit: Brome McCreary,

Thank You!



Photo: ODFW